

# HQIP PPI RESOURCES

## STUFF WE LIKE



Over the years we have always encouraged those working in clinical audit and QI to keep track of HQIP. They have devoted a large part of their website to involving patients and we know Kim Rezel has been instrumental in leading on much of this work. We must do better to get patients more involved and these resources are a great starting point to help us do that.

**INVOLVING PATIENTS IN CLINICAL AUDIT**  
Strategies for involving patients

**ESTABLISH A PATIENT PANEL**

A panel can:

- shape and validate the programme
- support the programme through giving the patient/carer perspective
- help produce the associated communication for other patients

Example: the Women and Families Group in the National Maternal and Perinatal Audit

**SELECT PATIENTS FOR STEERING OR ADVISORY GROUPS**

Patients have insightful viewpoints based on actual experience in healthcare and are more attuned to patient interests. These broad viewpoints are valuable in steering of advisory groups.

Example: the National Diabetes Audit

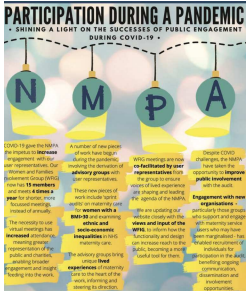
## THE 3 KEY ELEMENTS



HQIP have created a number of useful PPI publications. For example, we like their 'Guide to PPI in Quality Improvement' and tips on creating a patient panel.



In 2009 HQIP set up their Service User Network (SUN). This has approximately 40 representatives from local and national clinical audit groups. SUN meet quarterly.



The HQIP PPI case studies are invaluable and describe how national and local leaders have engaged patients in their projects. You can submit your PPI best practice work to HQIP.