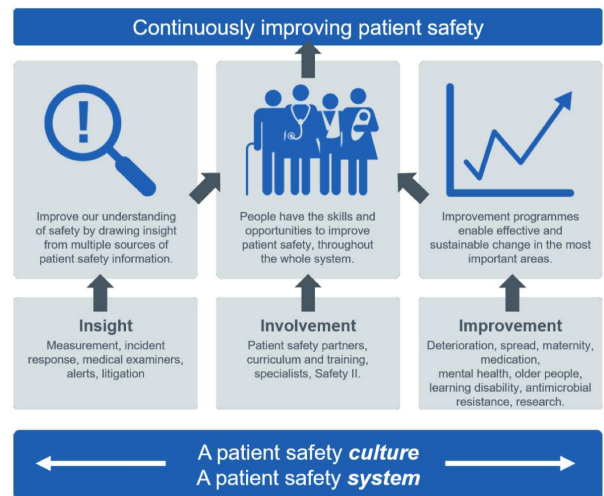


# Patient Safety Strategy

## STUFF WE LIKE

Given that a key part of CASC's work involves delivering training in various patient safety and improvement techniques such as Root Cause Analysis and Significant Event Audit we welcome the publication of the new NHS Patient Safety Strategy focusing on safer culture, systems and patients. At 82-pages it is clearly a meaty document but it is obviously essential reading for all those delivering healthcare.



## THE 3 KEY ELEMENTS



The current NRLS and StEIS will be replaced. A new single portal system aims to be easier for frontline staff to use. It is great to know that the emphasis will be on learning and QI.



Don Berwick and the IHI advocate working with Patient Safety Partners. Work to include patients, carers and families is considered essential within the new strategy. Take a look [here](#).



We like the new flexible timescales for the reporting of systems based patient safety investigations rather than the 60 day limit. Timescales will be agreed with patients, families, commissioners etc.

If you require accredited training in Root Cause Analysis or Significant Event Audit then please contact the CASC team via [www.clinicalauditsupport.com](http://www.clinicalauditsupport.com)